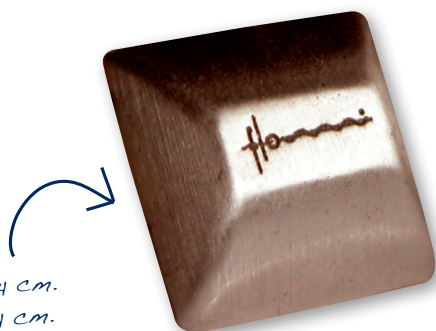


Positive Energy for People & Planet

MOBILEFLOWW®



Length ± 1,4 cm.
Width ± 1,4 cm.

Improved quality of life

Thank you for purchasing the mobileFloww®. The mobileFloww® has been specifically designed to allow you to make mobile and cordless calls in a natural way. The mobileFloww® acts as a transformer and converts electromagnetic radiation into a field of natural body frequencies, the so-called Floww® Field. The energy needed for this is provided by the mobile phone itself: the more radiation, the more powerful the effect of mobileFloww®. Users indicate that they experience calls with the mobileFloww® as more enjoyable and less stressful than calls without the mobileFloww®.

Experts confirm that the patented Floww Health Technology supports the preservation of peace and vitality in the body. Thanks to the Floww® Field users often experience an increased vitality as soon as they start to use a Floww®-product. Would you like to measure the effect of Floww® on yourself? Then sign up with research institute Soffos at www.soffos.eu (for more information see below).

Range of the mobileFloww®

The mobileFloww® has a range of 50 cm around the mobile phone.

Instructions for use of mobileFloww®

- The mobileFloww® can be attached to the mobile phone simply by using the adhesive layer.
- For optimal performance of the product, the mobileFloww® has to be placed as close to the built-in antenna as possible. To find out where the antenna is located, see your mobile phone's user instructions.
- The mobileFloww® can also be attached to a DECT-phone. On a DECT-phone the mobileFloww® should also be placed as close as possible to the antenna which receives the signal from the base station. To find out where the antenna is located, see the user instructions of your DECT-phone.

User tips and guarantee

For additional user tips, warranty provisions, a download of the brochure and instructions for use of all Floww®-products, see www.floww.com

Health report and scientific research

Each user can participate anonymously in scientific research into Floww Health Technology done by independent research institute Soffos. All participants receive a free health report. For more information see www.soffos.eu or www.floww.com

Disclaimer

Floww®-products are not medicines. If you have physical complaints it is always advisable to contact your doctor. Floww®-products should only be used as indicated in the information material supplied by Floww® International. Because the long-term effects of wireless technology are unknown, Floww® International recommends you to reduce exposure where possible out of precaution. In addition, we refer to our general terms and conditions. These can be downloaded from our website, www.floww.com.

RADIATION & CHILDREN

Experts

Experts assume that children are especially vulnerable to the potentially harmful effects of mobile and wireless networks on their health. Wireless technology has been introduced without clear knowledge of the long-term effects. Therefore, measures are being taken internationally.

Council of Europe

The Council of Europe adopted a resolution in 2011 which recommends wireless internet and mobile phones to be banned from schools out of precaution. Floww organizes lectures in schools on children, young people and radiation. Are you interested in a lecture at your child's school? Then please contact Floww International: info@floww.com



for mobile and
cordless phones



for tablet, computer
and television



for
on the road



for at home and
in the office

patented technology CE

